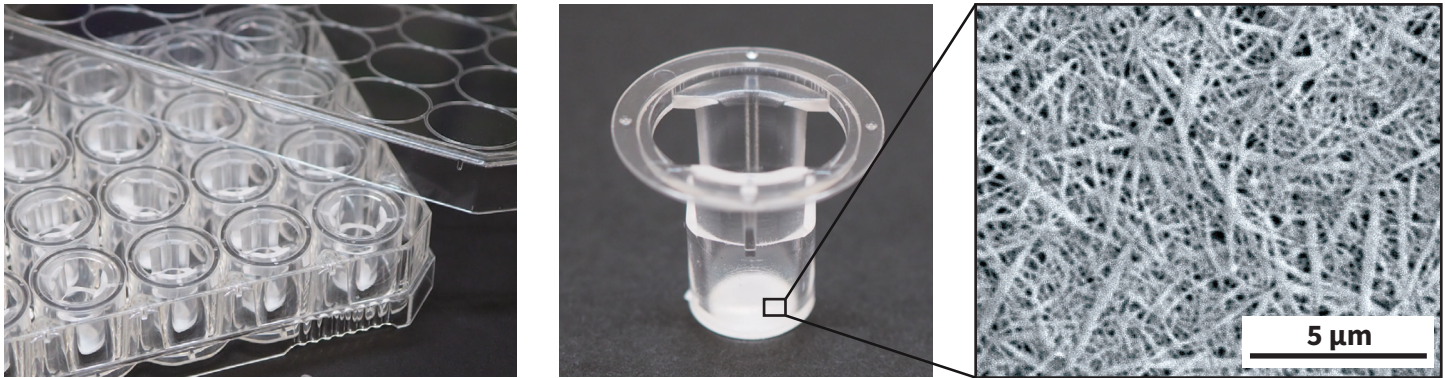


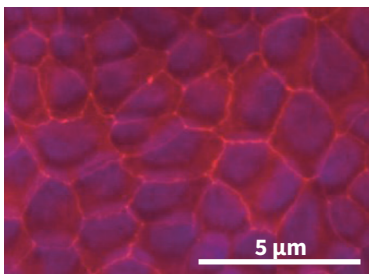
High Permeability Atecollagen insert for 24 well plate



Features

- Creation of barrier function evaluation model
- Membranes have an Atelocollagen fibrous structure permeate molecules greater than 600 kDa
- Hanging inserts for ease of use

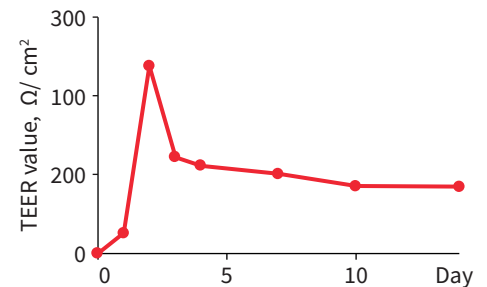
For barrier function evaluation using epithelial cells



Immunostaining (red: ZO-1; blue: nuclear)



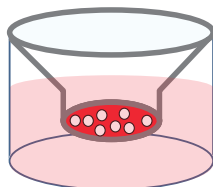
TEER measurement



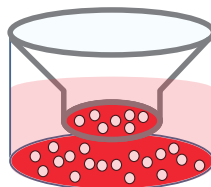
TEER measurement results

Epithelial cells form tight junctions that restrict the flow of ions and molecules between the luminal and basement membrane sides of the cell layer. Canine kidney tubular epithelial cells (MDCK cells) were cultured for 2 weeks on FibColl®. During the course of the culture, tight junctions formed as shown the development of Transepithelial Electrical Resistance (TEER), which indicates that the free flow of ions across the epithelial barrier was impeded. (Internal data)

On-membrane culture



Co-culture



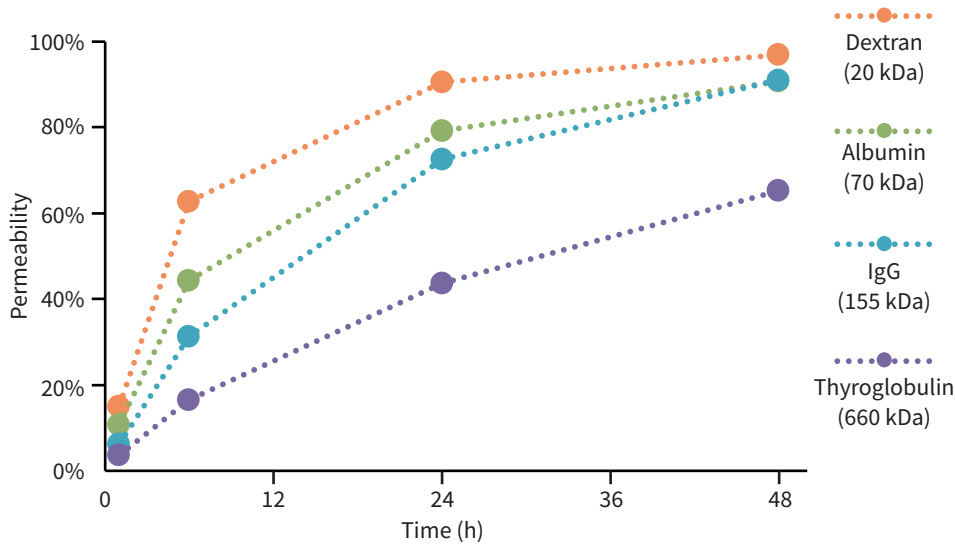
Cell sheet transplantation



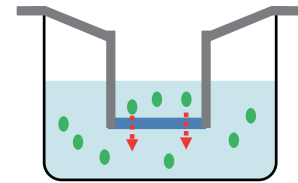
REPROCELL is an authorized distributor of KOKEN products outside of Japan.

The KOKEN company name and logo, and the brand names FibColl® and AteloCell®, are the property of KOKEN Corp. Ltd., Japan

Atelocollagen membrane permeates high molecular weight proteins

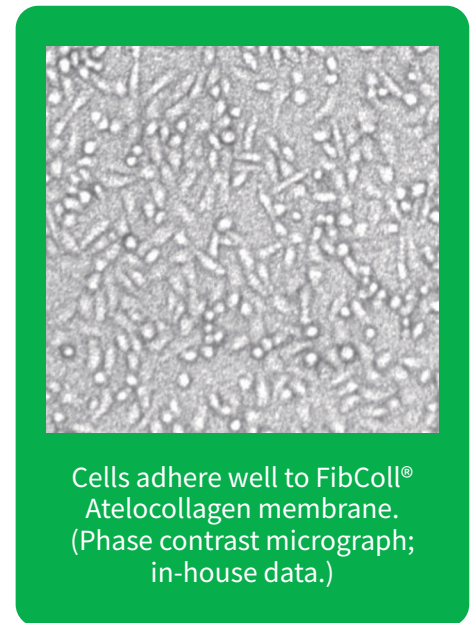
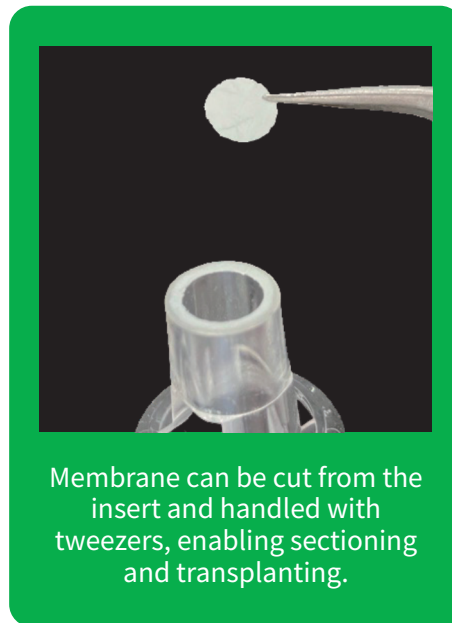
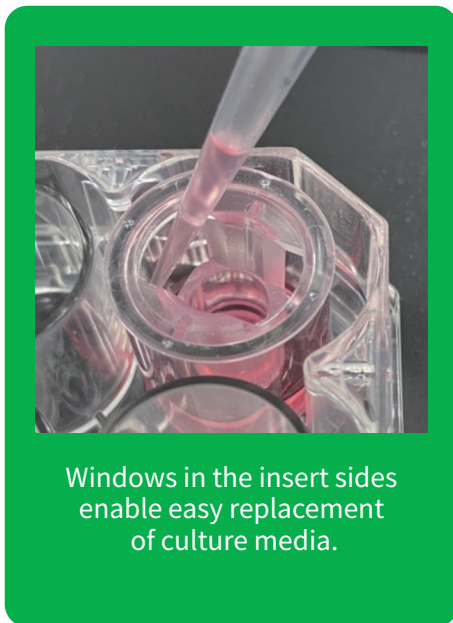


Schematic diagram of permeability evaluation



The test protein solution was added to one side of the FibColl® membrane, and the molecules that permeated to the other side were quantified to confirm the permeability of the inserts. (Internal data)

Cell culture insert for ease of use



Product Information

Product Name	Product Code	Dimensions	Pack Size	Storage
FibColl® Atelocollagen Inserts 24	KKN-FAI-24	Insert: ϕ 19mm \times 16 mm Membrane: ϕ 6.4 mm \times 35 μ m	24 inserts	Room temperature

REPROCELL Global:

<https://www.reprocell.com/koken-atelocollagen/fibcoll-atelocollagen-inserts-24>

REPROCELL USA Store:

<https://store.reprocell.com/3d-cell-culture-c2/fibcoll-atelocollagen-inserts-24-p510>